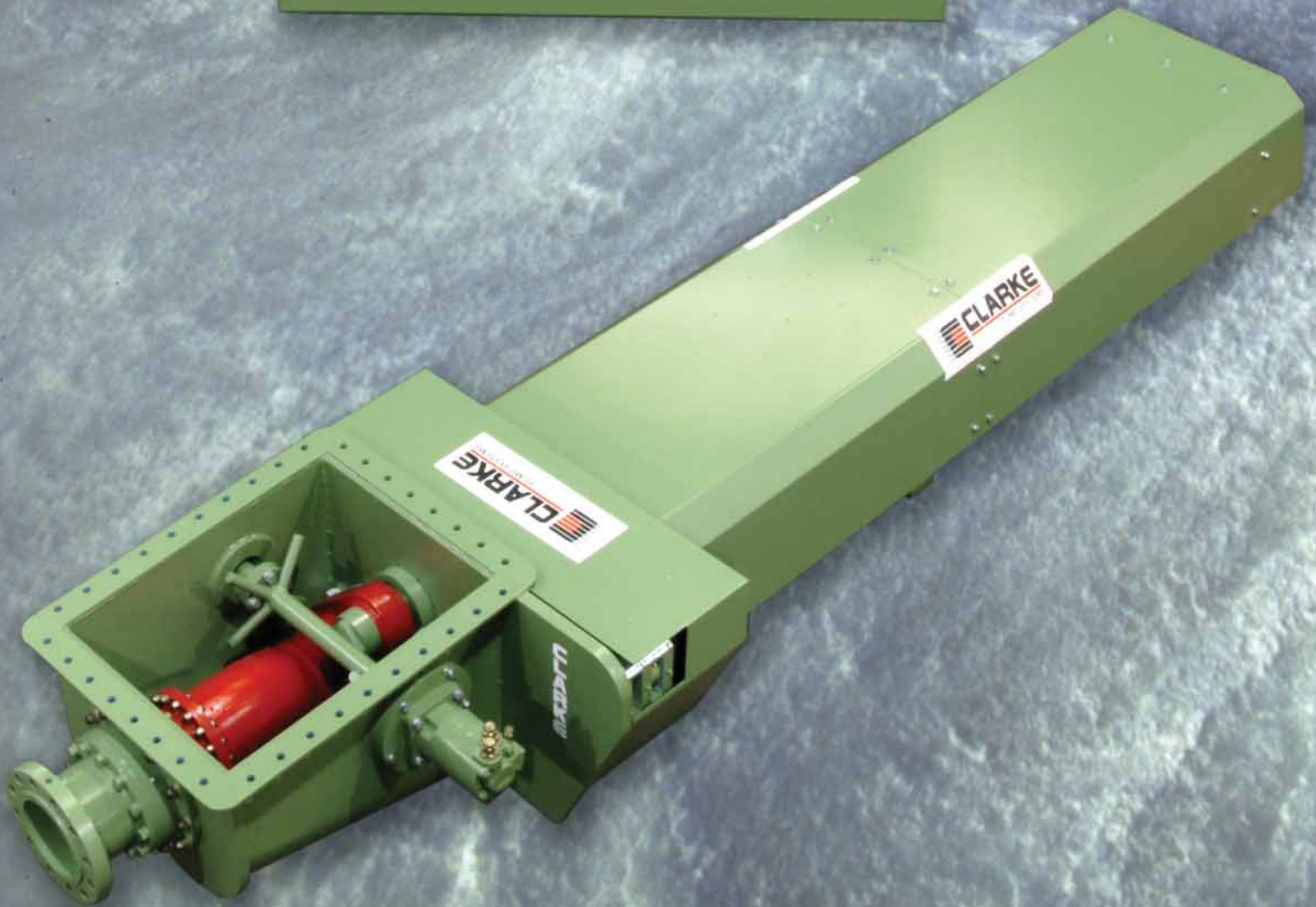


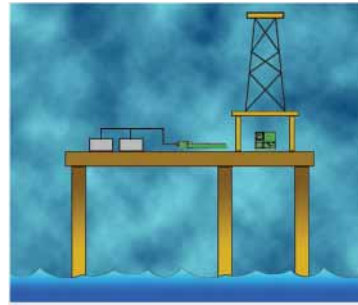
**CLARKE**  
PUMP SYSTEMS



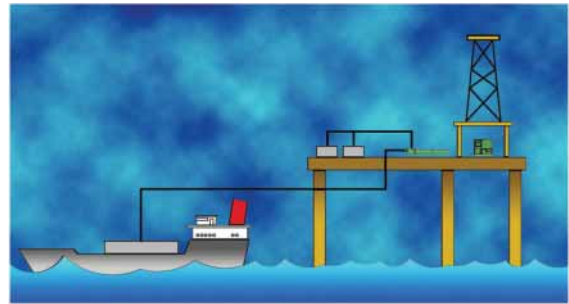
**Drill Cuttings Pump System**

## Equipment Features

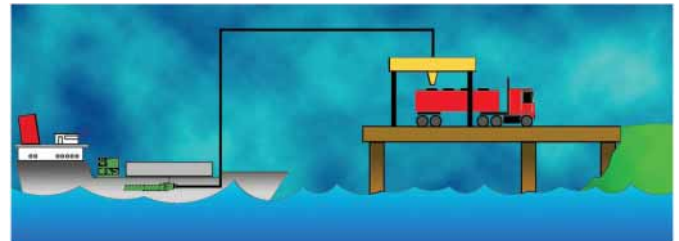
- 1 Multi purpose twin cylinder piston pump systems suitable for the conveyance of a wide variety of materials containing coarse grain high density solids
- 2 Full flow swinger tube system – no valves-clog resistant
- 3 Minimum number of rapid change wear parts including Clarke “Di – Hard” wear plate and wear ring combination
- 4 Large particle “foreign body” pump capability with no damage to the pump system
- 5 Clarke “Kleenflo” Hopper System with internal hydraulic remixer system
- 6 Designed for continuous duty 24/7 applications
- 7 Compact pump and power pack modules
- 8 Diesel and electric drive power pack options
- 9 Hazardous area and safe area pump pack and power pack modules available
- 10 Multi-purpose pump systems with a wide range of industrial sludge applications.



Rig deck pump to row of storage bins on rig deck.



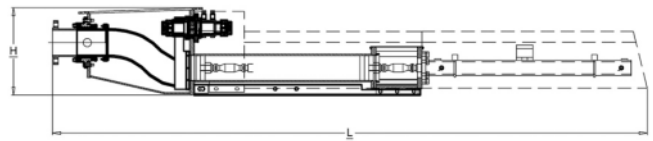
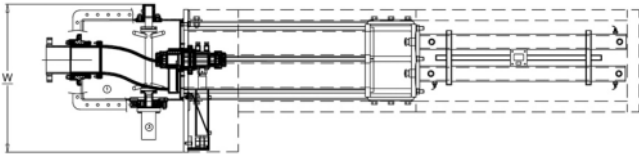
Rig deck pump to bulk storage bin on ship.



Bulk storage bin on ship to tanker transport on shore.



## Drill Cuttings - Pumps



	DCP 15/91 PP Process Pump	DCP 15/91-30 TP Transfer Pump	DCP 18/91-40 TP Transfer Pump	DCP 18/120-50 TP Transfer Pump
Pump Output*	2-15 M <sup>3</sup> /Hr [2-20 Yd <sup>3</sup> /Hr]	3-30 M <sup>3</sup> /Hr [0-39 Yd <sup>3</sup> /Hr]	0-40 M <sup>3</sup> /Hr [0-52 Yd <sup>3</sup> /Hr]	0-50 M <sup>3</sup> /Hr [0-65 Yd <sup>3</sup> /Hr]
Maximum Line Pressure **	60 Bar [870 PSI]	60 Bar [870 PSI]	45 Bar [653 PSI]	60 Bar [870 PSI]
Maximum Horizontal Plumbing Distance	100 Meters [328 ft]	400 Meters [1312 ft]	300 Meters [984 ft]	600 Meters [1969 ft]
Maximum Vertical Plumbing Distance	25 Meters [82 ft]	100 Meters [328 ft]	75 Meters [246 ft]	100 Meters [328 ft]
Maximum Particle Size	40 mm [1.57 in]	50 mm [1.97 in]	50 mm [1.97 in]	50 mm [1.97 in]
Max Number of Pump Strokes Per Minute	2 to 15	0 to 28	0 to 28	0 to 28
Diameter of Pump Outlet Pipe/ANSI Flange Rating	125 mm [4.92 in] / 600#	125 mm [4.92 in] / 600#	180 mm [7.08 in] / 600#	180 mm [7.08 in] / 600#
Capacity of Pump Hopper	250 litre [66 gals]	250 litre [66 gals]	250 litre [66 gals]	250 litre [66 gals]
Electrical Requirement	18.5 kW	55 kW	55 kW	75 kW
Power Pack Model Required	PP-185	PP-551	PP-551	PP-751

ATEX Certification (Optional)

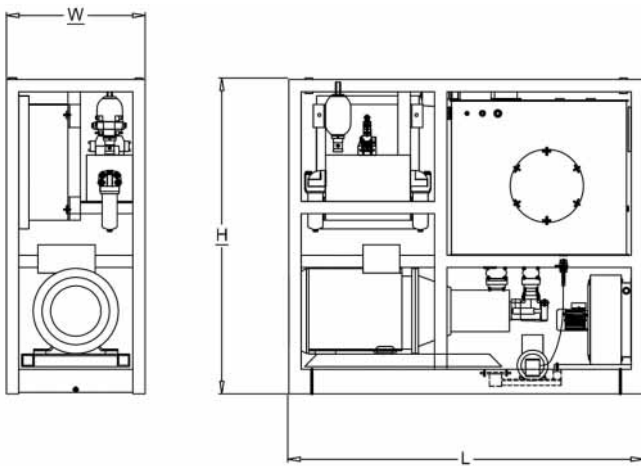
SIRA 04 ATEX T022



### Dimensional Data / Weights - Drill Cuttings Pump

	DCP 15/91 PP	DCP 15/91-30 TP	DCP 18/91-40 TP	DCP 18/120-50 TP
Length mm [in]	3220 [126.8]	3220 [126.8]	3720 [146.5]	4300 [169.3]
Width mm [in]	900 [35.4]	900 [35.4]	1200 [47.2]	1200 [47.2]
Height mm [in]	630 [24.8]	630 [24.8]	1000 [39.4]	1000 [39.4]
Weight Kg [Lbs]	900 [1983]	800 [1763]	1020 [2242]	1130 [2491]

## Drill Cuttings - Power Packs



Power Pack Model	Power (kW [HP])	RPM / Volts / Phase / Hz
PP-185	18.5 [25]	1450 / 415 / 3 / 50 1760 / 480 / 3 / 60
PP-551	55 [75]	1450 / 415 / 3 / 50 1760 / 480 / 3 / 60
PP-751	75 [100]	1450 / 415 / 3 / 50 1760 / 480 / 3 / 60

### Dimensional Data /Weights - Power Pack

	PP-185	PP-551	PP-551	PP-751
Length mm [in]	1500 [59.1]	2300 [90.6]	2300 [90.6]	2300 [90.6]
Width mm [in]	915 [36.0]	900 [35.4]	900 [35.4]	900 [35.4]
Height mm [in]	865 [34.1]	2050 [80.8]	2050 [80.8]	2050 [80.8]
Weight Kg [Lbs]	1000 [2204]	2400 [5291]	2400 [5291]	2500 [5512]

This information is provided as a general guide. Please refer to individual product brochure for specific information.

\* Maximum theoretical output is dependent on the type of material being pumped, material consistency, delivery pipeline diameter and length.

\*\* Indicates maximum theoretical pressure at optimum hydraulic system efficiency.



**David Mundell**  
Grange Works  
Lomond Road  
Coatbridge UK  
ML5 2NN

Tel: + 00 44 1236 707557  
Fax + 00 44 1236 427274

[dmundell@clarkesystem.com](mailto:dmundell@clarkesystem.com)



**Mark Evans**  
3133 East Kemper Road  
Cincinnati  
Ohio 45241  
USA

Tel: +1 513-719-2301  
Fax: +1 513-771-0726

[mevans@clarkesystem.com](mailto:mevans@clarkesystem.com)